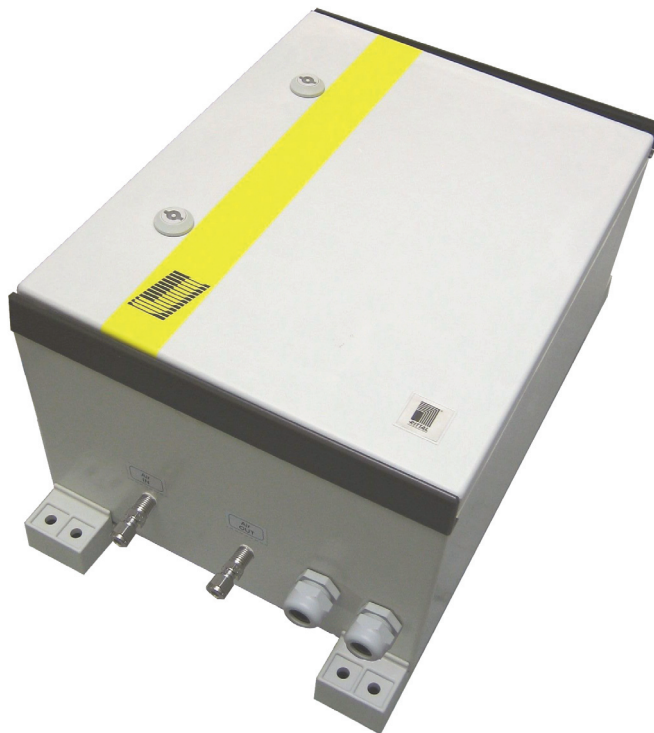




JES-301K

Back Purge Control Unit



APPLICATION

- Extractive gas analysis
- Emission and process monitoring
- Control of automatic back purge of gas sampling probes series JES-301
- Applications with high-dust concentration
- For regular cleaning of probe filter, filter chamber and possible pre-filter

BENEFITS

- For in and outdoor mounting suitable
- Fully programmed two-stage back purge program
- Easy adjustment of the back purge cycles by connection of only one cable
- Save operation due to status message
- No entry of purge gas into sample gas possible

FEATURES

- In robust weatherproof FRP housing
- For wall mounting
- PLC (programmable logic controller)
- Adjustable interval for back purge cycles
- Status contact
- Safety shut-off valve
- Control for process shut-off valve



TECHNICAL DATA

MODEL

JES-301K

| | |
|-------------|-------------------------|
| Description | back purge control unit |
|-------------|-------------------------|

OPERATION

| | |
|--------------------------------|---|
| Sample gas flow rate* | approx. 4 Nm ³ /hr at 5 bara, 5 Nm ³ /h at 7 bara |
| Ambient temperature / Humidity | 0° to +40 °C* (32° to 104 °F*) / < 95 % RH, non-condensing |
| Operating pressure | 4...7 bara |
| Air for back purge | instrument air according to ISO 8573-1 Class 1.2.1** |

CONSTRUCTION

| | |
|--|---|
| Dimensions (W x H x D) | 300 x 400 x 200 mm (11.81 x 15.75 x 7.87 in) |
| Installation | wall mounting Ex-free zone, max. 5 m away from gas sample probe |
| Weight | approx. 5 kg (44 lbs) |
| Housing / Color | FRP, similar 7032 |
| Gas wetted materials back purge | PVDF, SS316, PA, brass, Viton® |
| Connection back purge inlet and outlet | stainless steel fitting 6 mm |
| Approvals / Signs | CE |

ELECTRICS

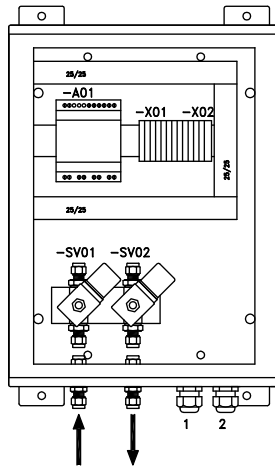
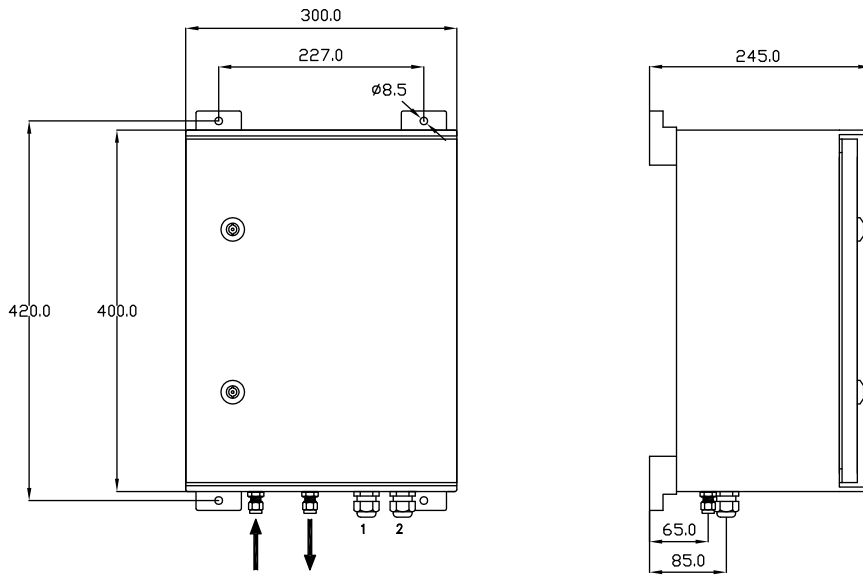
| | |
|----------------------------|--|
| Power supply | 230 VAC 50 Hz / 115 VAC 60 Hz / 24 VAC / 24 VDC |
| Electrical connection | screw terminals 0.08 mm ² – 2.5 mm ² |
| Electrical fuse protection | external on installation site |
| Protection class | IP 56 (EN 60529) |
| Status relay | volt free contact |
| Switching capacity relay | max. 250 VAC / 5 A, min. 12 VDC 2.5 mA |
| Connection status relay | screw terminals 0.08 mm ² – 2.5 mm ² |
| Cable glands | 2 x M16 x 1.5, clamping range 5 – 10 mm |

* Version for extended ambient temperature range on request

** Pressure air conditioning system in chapter 10

DIMENSIONS

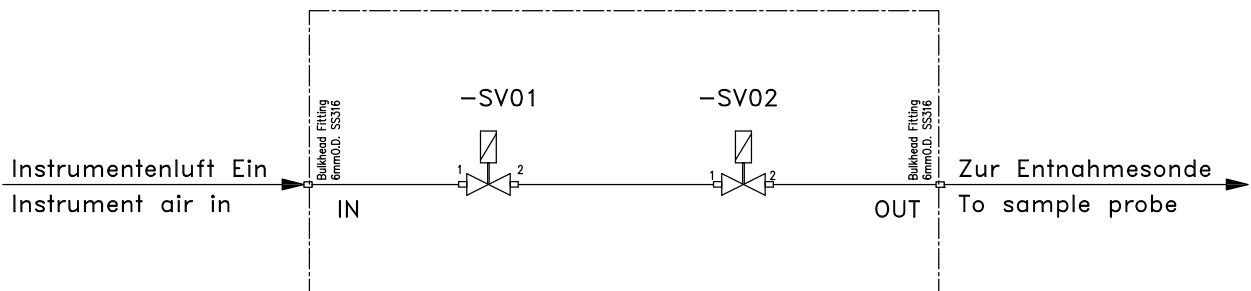
dimensions in mm



- A01 ... PLC (programmable logic controller)
- X01, -X02 ... Connection terminals
- SV01 ... Safety shut-off valve
- SV02 ... Clocked back purge valve

FLOW CHART

this flow chart includes all possible options



- SV01 ... Safety shut-off valve
- SV02 ... Pulsed back purge valve

ORDER CODE

| PART N° | DESCRIPTION |
|------------|--|
| 35.00012 | JES-301K, 230 VAC 50 Hz, incl. 2 solenoid valves and PLC in FRP housing, fully tubed, wired and programmed, connection fittings 6 mm |
| 35.00013 | JES-301K, 115 VAC 60 Hz, incl. 2 solenoid valves and PLC in FRP housing, fully tubed, wired and programmed, connection fittings 6 mm |
| on request | JES-301K, 24 VDC, incl. 2 solenoid valves and PLC in FRP housing, fully tubed, wired and programmed, connection fittings 6 mm |
| on request | JES-301K, 24 VAC, incl. 2 solenoid valves and PLC in FRP housing, fully tubed, wired and programmed, connection fittings 6 mm |
| 35.00991 | 1/4" fittings for both ports |
| 35.90303 | Back purge controller PLC for DIN rail mounting (pre-programmed PLC, selectable purge interval) |

Put together a sampling probe exactly according to your requirements by choosing additional moduls, e.g. heater elements, solenoid valves, controllers and air accumulators.

Please refer to this seperate product data sheet for further information.

UPGRADE OPTIONS for JES-301 Gas Sampling Probes

- **Back purge control valves**
- **Back purge reduction valves**
- **Unheated air accumulators**
- **Heated air accumulators**