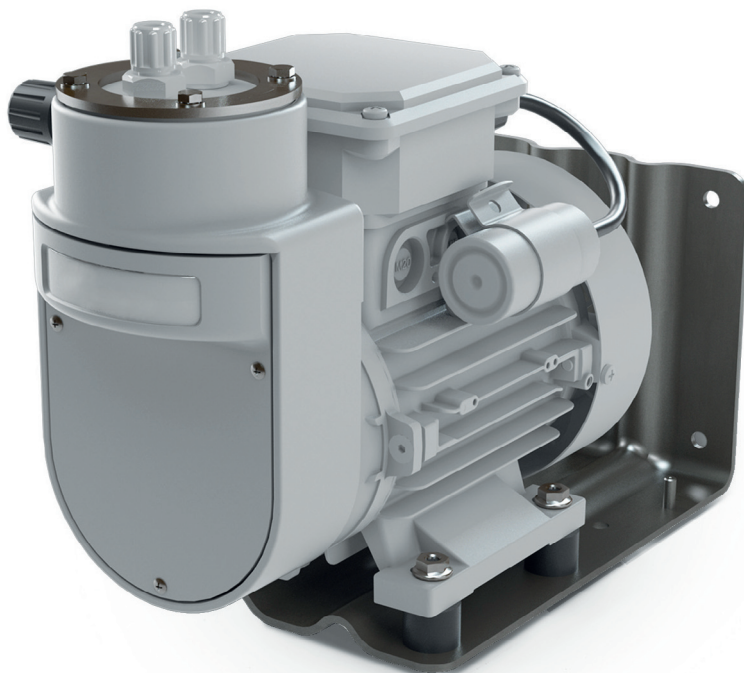




JSP-200

Sample Gas Pump with Bypass Valve



APPLICATION

- For extractive gas analysis
- For emission and process monitoring
- For wet sample gas
- For chemical industry, petrochemistry or biochemistry

BENEFITS

- Proven pump technology
- Easy to remove valves
- Single-piece bellows
- Conveys sample gas with condensate

FEATURES

- Bellow pump
- Pump with housing
- Low noise emission
- 115 V version with FM C-US approval
- With built-in bypass valve
- Includes mounting bracket with vibration dampers



TECHNICAL DATA

MODEL

JSP-200

Description	bellow sample gas pump with built-in bypass valve
-------------	---

OPERATION

Pump capacity at atm. pressure	6.7 NI/min (400 NI/h)
Max. media temperature	max. 160 °C (212 °F)
Ambient temperature	max. 60 °C (140 °F)
Operating pressure max.	max. pre-pressure 0.5 barg, max. 1.6 barg as feed curve
End vacuum max.	-0.6 barg (8.7 psig)

CONSTRUCTION

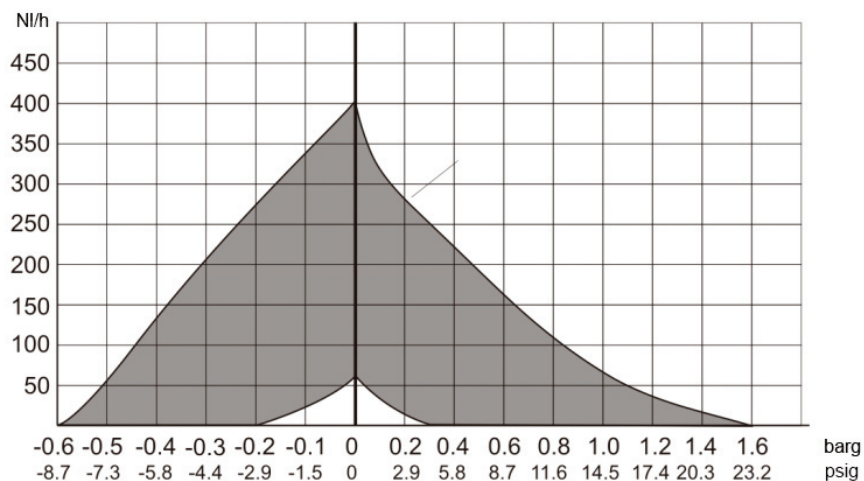
Dimensions all over (W x H x D)	230 V: 140 x 257 x 304 mm (230 V: 5.51 x 10.12 x 11.97 inch) 115 V: 154 x 257 x 304 mm (115 V: 6.06 x 10.12 x 11.97 inch)
Weight (without accessories)	approx. 6.48 kg (14.3 lb)
Connections inlet/outlet	G1/4" f
Gas wetted materials	PTFE, PVDF, PEEK
Pump head material	PTFE with bypass valve (adjustable from 1 NI/min to 6.7 NI/min)
Valve material	PTFE, PEEK
Mounting	incl. mounting bracket and set of vibration dampers
Protection class	electric IP55, mechanical IP20
Approvals / Signs	CE, FM C-US (115 V only)

ELECTRICS

Power supply	230 V 50/60 Hz, 0.78/0.86 A or 115 V 50/60 Hz, 1.56/1.72 A
Power consumption	200 W
On time	100 %
Electrical connection	junction box on top of motor with M16x1.5 cable gland 6 – 10 mm (internal terminal strip)

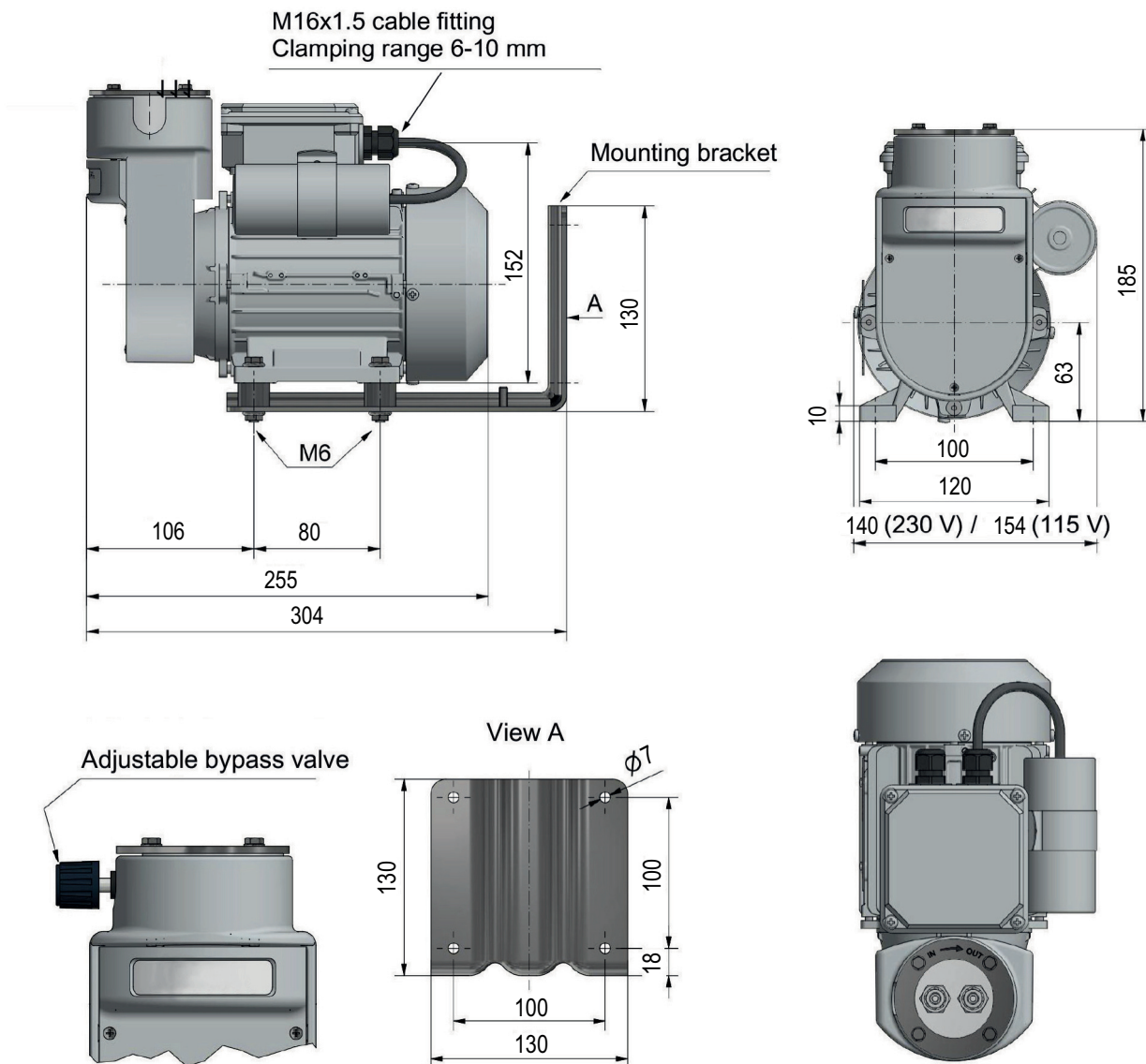
FEED CURVE

this flow chart includes all possible options



DIMENSIONS

dimensions in mm



ORDER CODES

Part No.	Description
85.07101	JSP-200 Sample gas pump with bypass valve 230 V 50/60 Hz CE
85.07102	JSP-200 Sample gas pump with bypass valve 115 V 50/60 Hz CE, FM C-US