



JSP-100

Sample Gas Pump with Bypass Valve



APPLICATION

- For extractive gas analysis
- For emission and process monitoring
- For wet sample gas
- For chemical industry, petrochemistry or biochemistry

BENEFITS

- Proven pump technology
- Easy to remove valves
- Single-piece bellows
- Conveys sample gas with condensate

FEATURES

- Bellow pump
- Pump with housing
- IP20 protection
- Requires little space
- With built-in bypass valve
- FM C-US approval (option)
- Special design for vibration environments
- Includes mounting bracket with vibration dampers



TECHNICAL DATA

MODEL

JSP-100

Description	below sample gas pump with built-in bypass valve
-------------	--

OPERATION

Pump capacity at atm. pressure	4.7 NI/min [280 l/h]
Max. media temperature	70 °C [158 °F]
Ambient temperature	0 °C to 50 °C [32 °F to 122 °F]
Operating pressure max.	max. pre-pressure <0.3 barg, 1.45 barg as feed curve
End vacuum max.	-0.6 barg [8.7 psig]

CONSTRUCTION

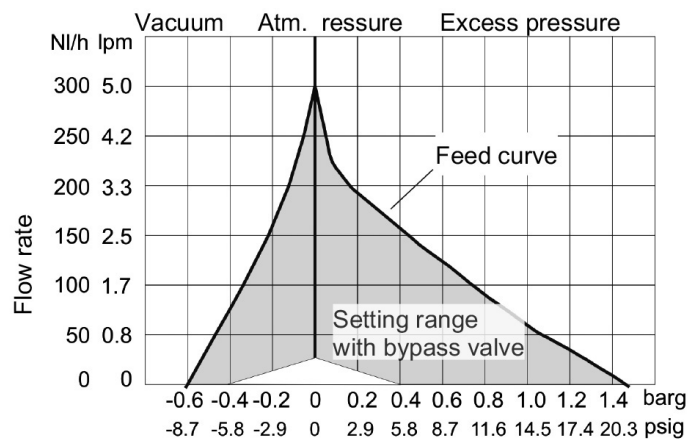
Dimensions all over (W x H x D)	186 x 158 x 85 mm max. [7.32 x 6.22 x 3.45 in max.]
Weight (without accessories)	approx. 1.32 kg [2.9 lbs]
Connections inlet/outlet	G1/4" f
Gas wetted materials	PTFE, PVDF, Viton®
Pump head material	PVDF with bypass valve (adjustable from 0.5 to 4.7 NI/min)
Valve material	PTFE/PVDF
Mounting	incl. mounting bracket and set of vibration dampers
Protection class	IP20
Approvals / Signs	CE, optional: FM C-US (115 V only)

ELECTRICS

Power supply	230 V 50 Hz, 0.48 A or 115 V 60 Hz, 0.84 A
Power consumption	115 W
On time	100 %
Electrical connection	incl. 3 m [9.8 ft] connection cable

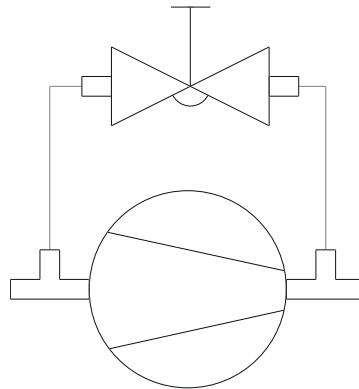
FEED CURVE

this flow chart includes all possible options



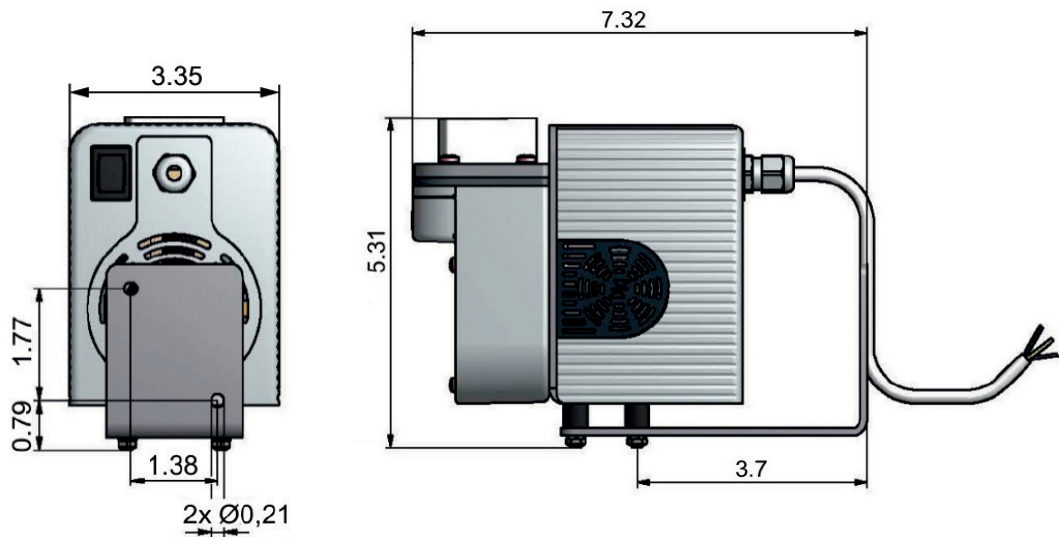
At 60 Hz +10% flow rate

FLOW CHART



DIMENSIONS

dimensions in mm



ORDER CODES

Part No.	Sampling Pipe
85.07103	JSP-100 Sample gas pump with bypass valve 230 V 50 Hz CE
85.07104	JSP-100 Sample gas pump with bypass valve 115 V 60 Hz CE
85.07105	JSP-100 Sample gas pump with bypass valve 115 V 60 Hz FM C-US
85.07110	JSP-100 Sample gas pump with bypass valve 24 V CE