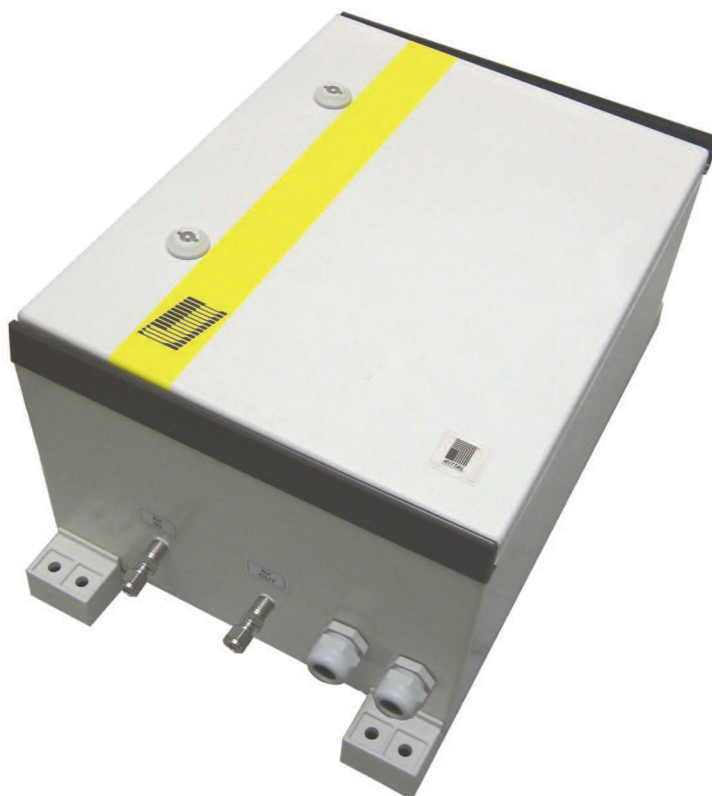




JES-301K Back Purge Control Unit



Gas Sampling Probes

Heated Sample Lines

Sample Gas Coolers

Condensate Treatment

Accessories

Gas Conditioning Systems

Sample Gas Converters

APPLICATION

- Extractive gas analysis
- Emission and process monitoring
- Control of automatic back purge of gas sampling probes series JES-301
- Applications with high dust concentrations
- For regular cleaning of probe filter, filter chamber and possible pre-filter

BENEFITS

- For in and outdoor mounting suitable
- Fully programmed two stage back purge program
- Easy adjustment of the back purge cycles by connection of only one cable
- Save operation due to status message
- No entry of purge gas into sample gas possible

FEATURES

- In robust weatherproof FRP housing
- For wall mounting
- PLC (programmable logic controller)
- Adjustable interval for back purge cycles
- Status contact
- Safety shut-off valve
- Control for process shut-off valve

TECHNICAL DATA

Model
JES-301K

Description	back purge control unit
-------------	-------------------------

Operation

Flow rate	approx. 4 Nm ³ /hr at 5 bara, 5 Nm ³ /h at 7 bara
Ambient temperature / humidity	0° to +40°C* / < 95 % RH, non-condensing
Operating pressure	4 to 7 bara
Air for back purge	instrument air according to ISO 8573-1 Class 1.2.1**
Place of installation	Ex-free zone, max. 5m away from gas sample probe

Construction

Dimensions over all (W x H x D)	300 x 400 x 200 mm
Installation	wall mounting
Weight	approx. 5 kg
Housing, colour	FRP, similar 7032
Back purge gas wetted materials	PVDF, SS316, PA, brass, Viton®
Connections back purge gas In / Out	stainless steel fitting 6 mm
Approvals / signs	CE

Electrics

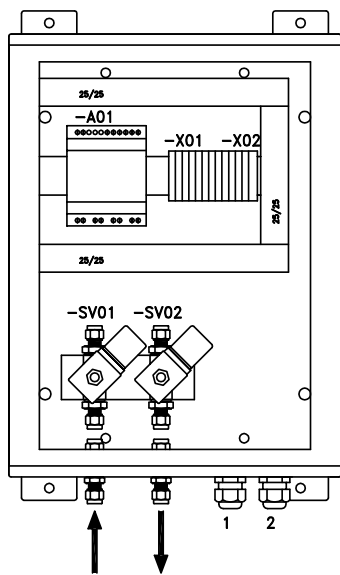
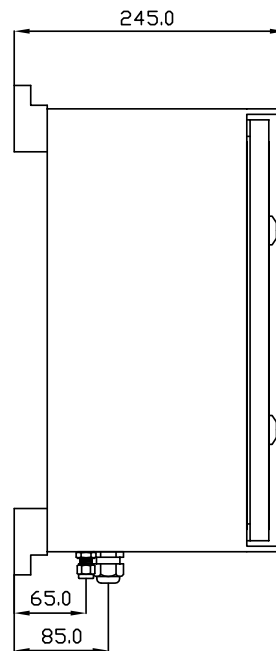
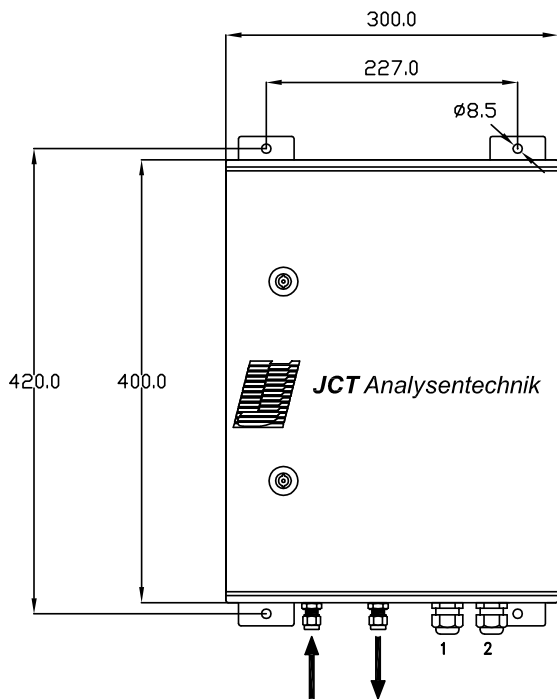
Power supply	230 VAC 50 Hz / 115 VAC 60 Hz / 24 VAC / 24 VDC
Electrical connection	screw terminals 0,08 mm ² to 2,5 mm ²
Electrical fuse protection	external on installation site
Protection class	IP 56 (EN 60529)
Status relay	volt free contact
Switching capacity relay	max. 250 VAC / 5 A; min. 12 VDC 2,5 mA
Connection status relay	screw terminals 0,08 mm ² to 2,5 mm ²
Cable glands	2 x M16 x 1,5, clamping range 5 to 10 mm

* Version for extended ambient temperature range on request

** Pressure air conditioning system in chapter 10

DIMENSIONS

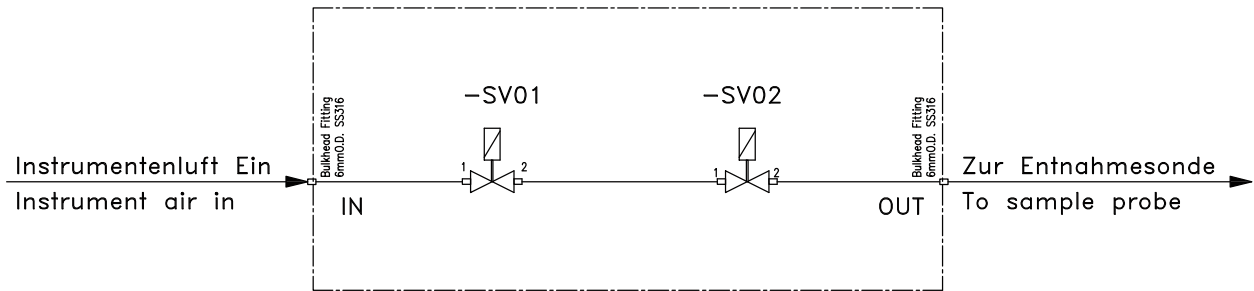
Dimensions in mm



-A01	PLC (programmable logic controller)
-X01, X02	Connection terminals

-SV01	Safety shut-off valve
-SV02	Clocked back purge valve

GAS FLOW DIAGRAM



-SV01 Safety shut-off valve

-SV02 Pulsed back purge valve

ORDER CODE

Part number	Description
35.00012	JES-301K, 230 VAC 50 Hz, incl. 2 solenoid valves and PLC in FRP housing, fully tubed, wired and programmed, connection fittings 6 mm
35.00013	JES-301K, 115 VAC 60 Hz, incl. 2 solenoid valves and PLC in FRP housing, fully tubed, wired and programmed, connection fittings 6 mm
On request	JES-301K, 24 VDC, incl. 2 solenoid valves and PLC in FRP housing, fully tubed, wired and programmed, connection fittings 6 mm
On request	JES-301K, 24 VAC, incl. 2 solenoid valves and PLC in FRP housing, fully tubed, wired and programmed, connection fittings 6 mm
35.00991	1/4" fittings for both ports

Put together a sampling probe exactly according to your requirements by choosing additional moduls, e.g. heater elements, solenoid valves, controllers and air accumulators.

Please refer to this separate product data sheet for further information:

- Upgrade Options for JES-301 Gas Sampling Probes**

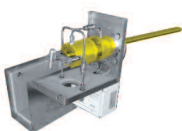
Back purge control valves

Back purge reduction valve

Unheated air accumulators

Heated air accumulators

Gas Sampling **Probes**



Heated Sample **Lines**



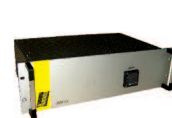
Sample Gas **Coolers**



Gas Conditioning **Systems**



NOx **Converter**



and **solutions** for



JCT Analysentechnik GmbH ■ Werner Heisenberg-Strasse 4 ■ 2700 Wiener Neustadt ■ AUSTRIA ■ T +43 2622 87201 ■ sales@jct.at