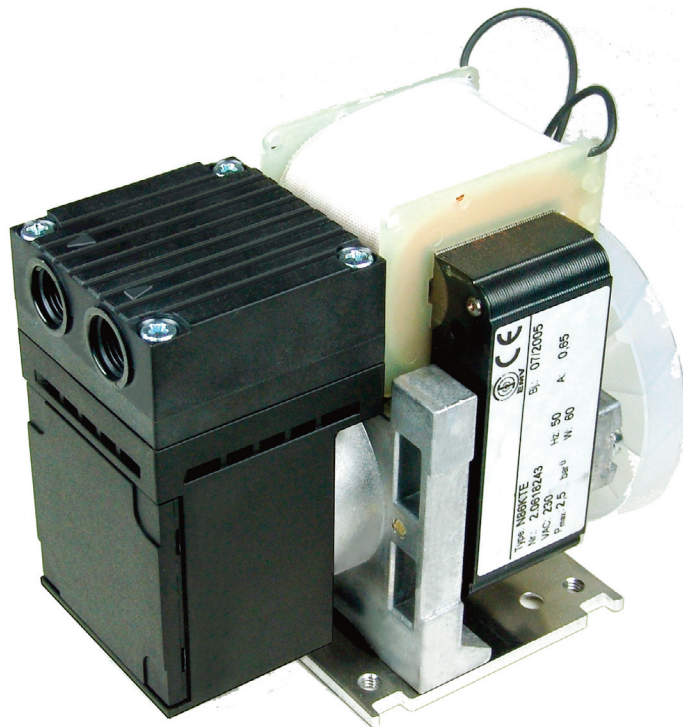




JSP-83 | JSP-86 KTE | JSP-89

Compact Sample Gas Pumps



APPLICATION

- For extractive gas analysis
- For emission and process monitoring
- For continuous pumping of sample gas
- For installation in gas analysis systems
- Suitable for mobile devices
- Applicable for long tube and long hose distances

BENEFITS

- Reliable continuous sample gas delivery
- No alteration of sample gas
- High suction power
- Easy mounting and integration in gas analysis systems
- Low noise and vibration operation
- Long life time
- Maintenance-free construction
- Corrosion resistant
- Gas tight

FEATURES

- For continuous operation
- Compact lightweight design
- Robust construction
- Pump capacity 3 / 5.5 / 9.5 NI/min
- Membrane pump
- Corrosion resistant materials: PPS, EPDM, FFPM, PTFE coated
- Ball bearing brushless shaded pole motor
- Oil-free gas path
- Operation in any installation position



TECHNICAL DATA

MODEL	JSP-83	JSP-86 KTE	JSP-89
Description	continuously working compact membrane sample gas pump		

OPERATION

Pump capacity at atm. pressure	3 NI/min	5,5 NI/min	9.5 NI/min
Max. media temperature	60 °C (104 °F)	40 °C (104 °F)	40 °C (104 °F)
Ambient temperature	5°...65 °C (40°...149 °F)	5°...40 °C (40°...104 °F)	5°...40 °C (40°...104 °F)
Operating pressure max.	1.5 bara	3.5 bara	1.5 bara
End vacuum max.	0.25 bara	0.16 bara	0.10 bara

CONSTRUCTION

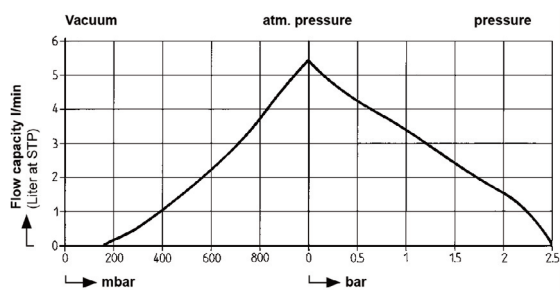
Dimensions all over (W x H x D)	64 x 99 x 105 mm	64 x 92,5 x 103 mm	64 x 95 x 117 mm
Weight (without accessories)	1.1 kg	1.1 kg	1.3 kg
Connections inlet/outlet	hose connector 4/6 mm	G1/8" f	G1/8" f
Gas wetted materials	PPS, EPDM	PPS, PTFE, FFPM	PPS, FFPM, PTFE coated
Pump head material	PPS	PPS	PPS
Valve / Membrane material	EPDM	FFPM, PTFE coated	FFPM, PTFE coated
Mounting	mounting base	mounting base	mounting base
Protection class	IP00	IP00	IP00
Approvals / Signs	-	-	-

ELECTRICS

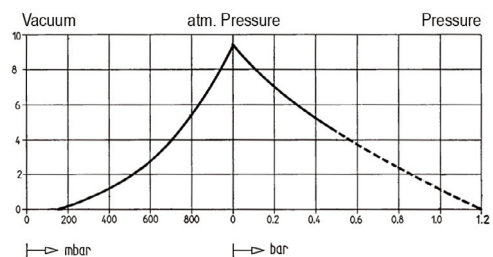
Power supply	230 VAC 50/60 Hz or 115 VAC 50/60 Hz	230 VAC 50 Hz or 115 VAC 50 Hz	230 VAC 50 Hz or 230 VAC 60 Hz
Power consumption	46 W	60 W	60 W
On time	100 %	100 %	100 %
Electrical connection	2 x 200 mm free strands 0.35 mm ² and 6.3 mm „Fast On“ earthing lead		

FEED CURVE

JSP-86 KTE



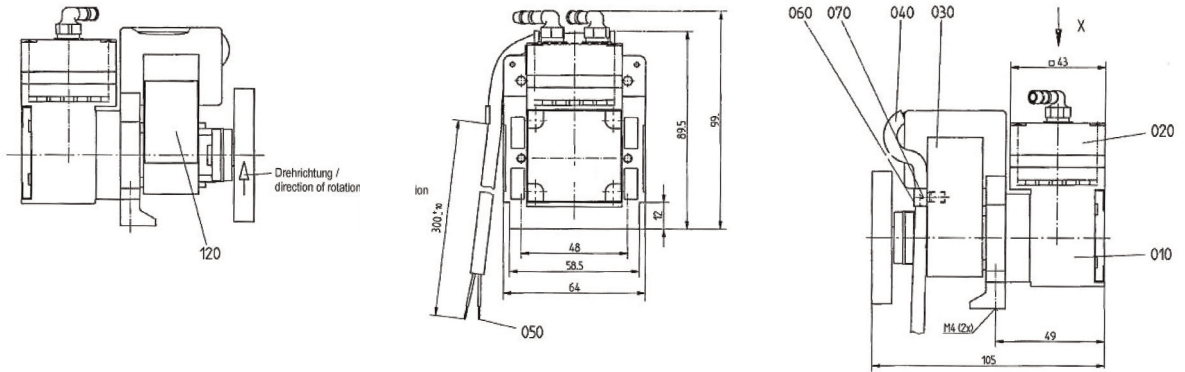
JSP-89



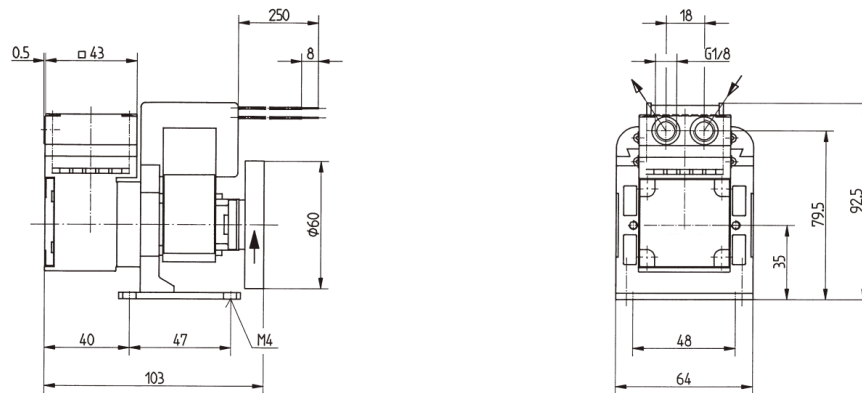
DIMENSIONS

dimensions in mm

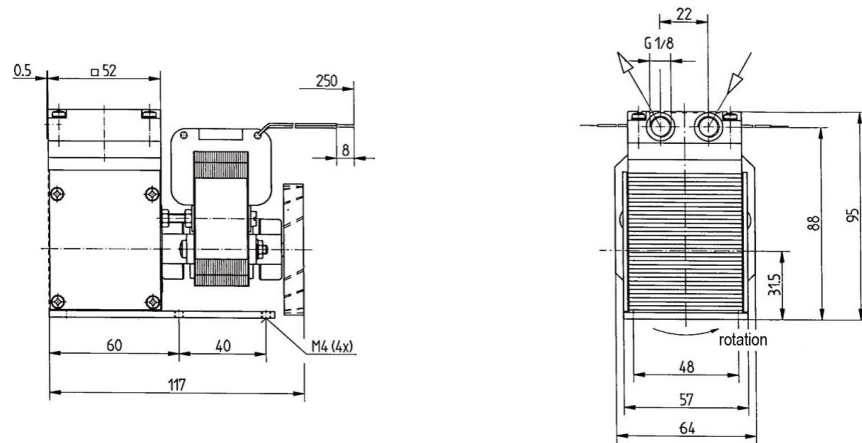
JSP-83



JSP-86 KTE



JSP-89



ORDER CODES

Part No.		Description
Pump 230 VAC	Pump 115 VAC	
K1233151	K1233152	JSP-83 / Diaphragm pump to JCC/JCL 50/60 Hz
85.08620	85.08627	JSP-86 KTE Membrane sample gas pump, 5.5 NI/min
85.08624		Mounting bracket for JSP-86 / JSP-89
85.08920		JSP-89 Membrane sample gas pump, 9.5 NI/min, 230 VAC 50 Hz
85.08921		JSP-89 Membrane sample gas pump, 9.5 NI/min, 230 VAC 60 Hz